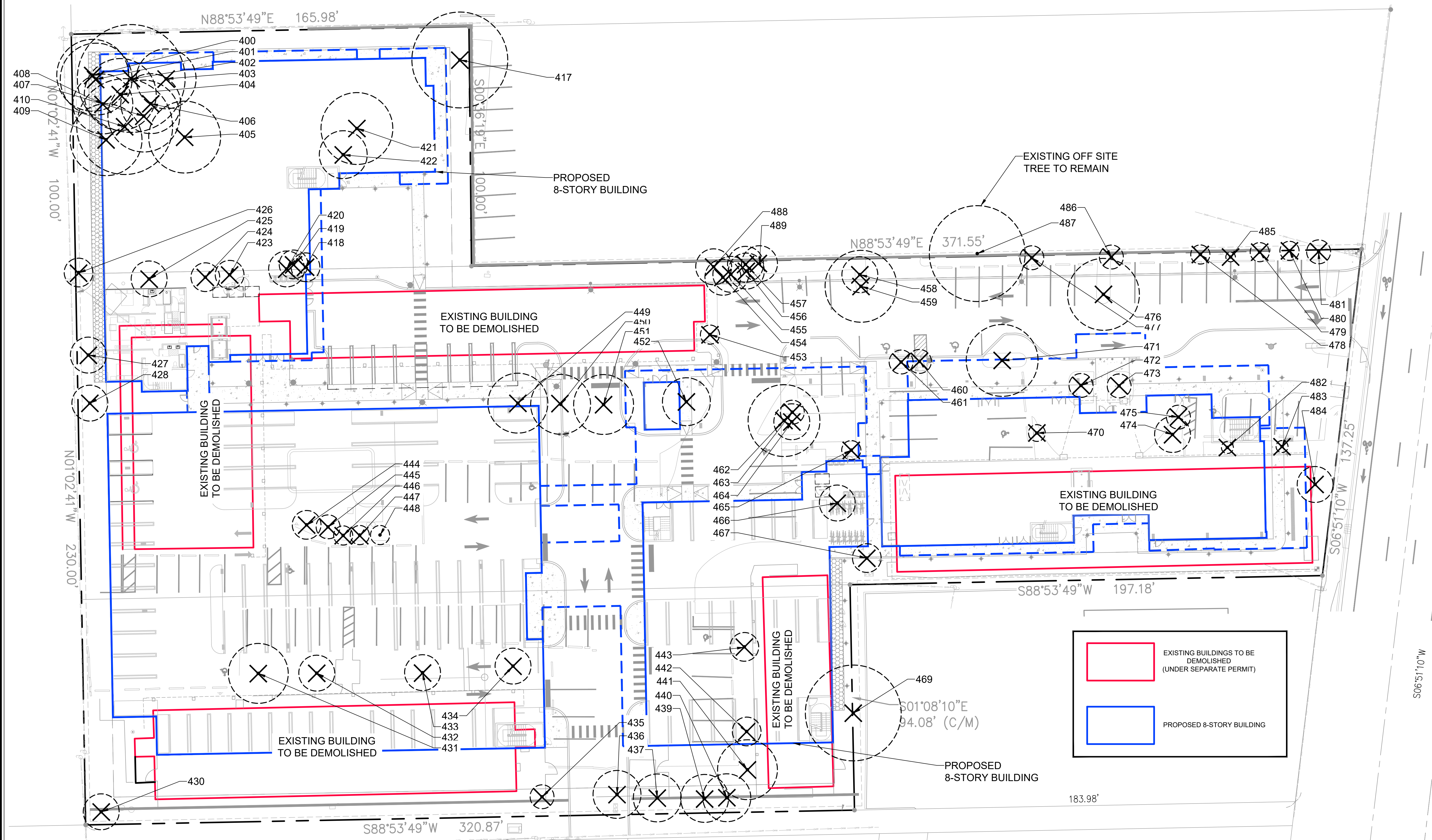


THE SATORI  
4211 N FEDERAL HIGHWAY  
POMPANO BEACH, FL



EXISTING BUILDINGS TO BE DEMOLISHED (UNDER SEPARATE PERMIT)

PROPOSED 8-STORY BUILDING

TREE DISPOSITION LEGEND

CANOPY

001

EXISTING TREE TO REMAIN

001

EXISTING TREE TO BE REMOVED

TREE DISPOSITION SUMMARY

NON-SPECIMEN TREES TO BE REMOVED	9 TREES (101 INCHES)
SPECIMEN TREES TO BE REMOVED	1 TREE (18 INCHES OR \$3,413)
PALMS TO BE REMOVED	58 PALMS (\$45,604)

NOTE: DEAD AND INVASIVE TREES NOT INCLUDED IN CALCULATIONS

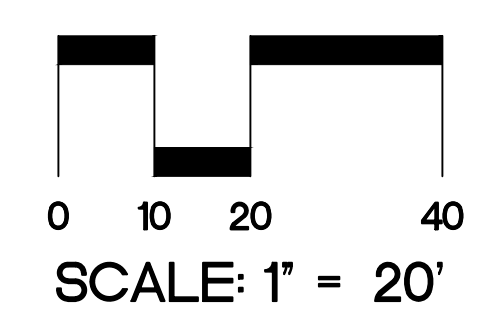
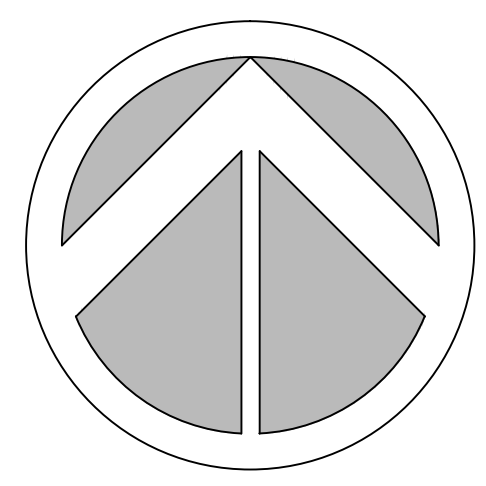
TREE MITIGATION SUMMARY

	REQUIRED	PROVIDED
NON-SPECIMEN TREE REPLACEMENT	101 INCHES	120 INCHES (ED-M, TH-M, TD-M)
SPECIMEN TREE REPLACEMENT VALUE (TREE 476: 18 INCHES)	\$3,413	\$3,750 (PU-M)
PALM REPLACEMENT VALUE	58 PALMS (\$45,604)	58 PALMS (\$53,875) (AM-M, PR-M, PS-M, RR-M, SP-M, VM-M)

- NOTES:
- TREE MITIGATION WAS CALCULATED PER SECTION 155.5204.E OF THE LAND DEVELOPMENT CODE
  - MITIGATION TREE AND PALM LOCATIONS AND SPECIFICATIONS SHOWN ON LANDSCAPE PLANS
  - SPECIMEN TREE VALUE DETERMINED PER THE TRUNK FORMULA METHOD TREE APPRAISAL. SEE ATTACHED TREE APPRAISALS.
  - SPECIMEN TREE REPLACEMENT VALUE CALCULATION: \$3,750  
(1) SCREW PINE (14' HT) = \$1,500 RETAIL x 2.5 MULTIPLIER = \$3,750 EA = \$3,750
  - PALM REPLACEMENT VALUE CALCULATION: \$53,875  
(10) TRIPLE CHRISTMAS PALMS @ 8' HT = \$150 RETAIL x 2.5 MULTIPLIER = \$375 EA x 10 = \$3,750  
(11) TRIPLE PYGMY PALMS @ 8' HT = \$150 RETAIL x 2.5 MULTIPLIER = \$375 EA x 11 = \$4,125  
(2) SYLVESTER DATE PALMS @ 12' CT = \$1,500 RETAIL x 2.5 MULTIPLIER = \$3,750 EA x 2 = \$7,500  
(7) ROYAL PALMS @ 14' GW = \$1,650 RETAIL x 2.5 MULTIPLIER = \$4,125 EA x 7 = \$28,875  
(23) SABAL PALMS @ 22' HT = \$175 RETAIL x 2.5 MULTIPLIER = \$437 EA x 22 = \$9,625  
PZ25-12000016  
03/03/2026
  - PROPOSED TREES/PALMS MEET MITIGATION REQUIREMENTS ARE THOSE ABOVE AND BEYOND LAND DEVELOPMENT REQUIREMENTS. SEE REQUIRED TREE CALCULATIONS ON SHEET L-4.

- MITIGATION TREES
- |      |                         |
|------|-------------------------|
| TD-M | Bald Cypress            |
| AM-M | Christmas Palm          |
| ED-M | Japanese Blueberry Tree |
| TH-M | Pink Tabebuia           |
| PR-M | Pygmy Date Palm         |
| RR-M | Royal Palm              |
| SP-M | Sabal Palm              |
| PU-M | Screw Pine              |
| PS-M | Sylvester Date Palm     |

SEE SHEET L-4 FOR FULL PLANTING SCHEDULE



SCALE: 1" = 20'

Sheet Title  
TREE  
DISPOSITION  
PLAN

Revision Dates  
10/27/25 - CITY  
COMMENTS  
12/16/25 - CITY  
COMMENTS

Date  
02/02/2026

Sheet Number  
L-1

Seal

STEPHEN M PECCIA, PLA  
LA 6667289